

**C R U I S E R**  
**R A C E R**  
 www.cruiser-racer.com

Buscarons, 6. 08022 Barcelona (Spain)  
 Tel.:(+34) 934 186 632  
 Mobile: (+34) 616 420 634  
 E-Mail: info@cruiser-racer.com

## BELLIURE ENDURANCE 35



<b>Yacht Name</b>	BELLIURE ENDURANCE 35	<b>LOA</b>	10.75 m
<b>Designer</b>	Peter Ibold	<b>Beam</b>	3.35 m
<b>Year</b>	1980	<b>Draft</b>	1.72 m
<b>Location</b>	Aegina, Greece	<b>Displacement</b>	8.300 kg
<b>Price</b>	75.000€	<b>Engine</b>	Volvo Penta D2-40
		<b>Accommodation</b>	5 Berth, 2 Cabin

### BROKER'S COMMENT:

BELLIURE Endurance 35 -- ready to sail blue-water cruiser, extensively refitted for ocean passages.

## DESCRIPTION:

### BELLIURE ENDURANCE 35

The yacht is a serious blue-water cruiser, built by Belliure Calpe in 1980 and designed by Peter Ibold.

It was extensively refitted in 2017-2018 for the Golden Globe Race and further upgraded in 2023.

#### **Endurance 35 -- ready to sail blue-water cruiser, extensively refitted for ocean passages.**

Endurance 35 built by Belliure Calpe in 1980, designed by Peter Ibold. A serious long-distance cruising yacht, extensively refitted in 2017-2018 for participation in the Golden Globe Race. Before the race, a major refit was completed at a Spanish shipyard, with strength tests, new rigging, ballast, and rudder installed. New North Sails, a Volvo Penta D2-40 engine, solar panels, radio, windvane, hydrogenerator, emergency rudder, and fittings for emergency sail rigging were also added.

All work was completed with a no-expense-spared approach, making her truly unique - a 'Land Rover Defender 4x4 of the ocean.' In 2023, after returning to the Mediterranean, additional work was done including refreshing the cabin interior, treating the teak deck, installing new portholes, custom-made mattresses, AIS and other equipment.

- Now ready to sail for a new owner, she's equipped for challenges in the Southern Ocean or for comfortable, confident cruising.
- The yacht available for viewing on Aegina, Greece, from 5 to 10 June.

## DESIGN

---

Builder: BELLIURE CALPE

Designer: Peter Ibold

Design Notes: The Endurance 35 is a classic long-distance cruiser known for seaworthiness, versatility and safe ocean passages. More than 750 Endurance 35 yachts have been launched worldwide in different materials and layouts.

## DIMENSIONS

---

LOA: 10.75 m

LWL: 8.12 m

Beam: 3.35 m

Draft: 1.72 m

Displacement: 8.300 kg

Dimension Notes: Long-keel blue-water cruiser.

## ENGINES

---

Engines: Volvo Penta D2-40

Engine Hours: 2000

Cruising Speed: 6 kn

Notes:

- Engine/Fuel Type: Volvo Penta D2-40
- Engine HP: 40hp
- Engine Hours: 2000
- Fuel Capacity: 250 litres
- Max Speed: 7 knots
- Volvo Penta D2-40 engine and gearbox installed **new in 2018**.

## TANKS

---

Fuel: 250 l

Water: 700 l

## GALLEY

---

Notes: New galley installed during the 2017-2018 refit.  
Galley sink with pressurized water and manual sea water tap.

## NAVIGATION INSTRUMENTS

---

Electronics: RAYMARINE

GPS: Furuno GP33

VHF: Standard Horizon DSC

Automatic pilot: Raymarine ST5000

Compass: Sestrel binnacle

Plotter: Raymarine Chart

Notes: **Electronics: Raymarine / Furuno / Icom / Standard Horizon**

- GPS: Furuno GP33
- VHF: Standard Horizon DSC
- LF
- ICOM LF

- Automatic pilot: Raymarine ST5000
- Compass: Sestrel binnacle
- Plotter / Chart: Raymarine Chart
- Raymarine speed/log/depth, tank gauges, clock and barometer, LED navigation lights, AIS installed in 2023.

## DECK EQUIPMENT

---

Hatches: Lewmar

Winches: 4 x Lewmar

- Notes:
- Deck hardware: Spinlock rope clutches, Lewmar winches and pedestal
  - Hatches: Lewmar
  - Winches:
    - 4 x Lewmar cockpit winches:
      - 2 x 46 self-tailing
      - 2 x 40 self-tailing
  - Hydrovane self-steering system new in 2018, mounted centrally on transom with A-frame. Watt&Sea charging system mounted on transom.
  - Lofrans Kobra electric windlass.
  - CQR main anchor. 30 m chain, new 2018.
  - Teak decks.
  - Wheel steering with Lewmar pedestal.
  - Cockpit table.
  - Outboard bracket to transom.
  - Re-mounted fairleads.

## SPARS & RIGGING

---

- Sails:
- All new sails 2018:**
- Mainsail with 3 slab reefs
  - Mizzen
  - Twin headsails / butterfly
  - Genoa
  - Staysail
  - Storm jib
  - Trisail

- Spinnaker
- Gennaker

Rigging: Cutter ketch

Spars and Rigging  
Notes:

- Rigging: Cutter ketch rig
- Running Rigging: All new cordage and rope in 2018
- Spinnaker pole: Yes, stored on deck
- Furling system:

rofurl C350 on Yankee, new 2018  
Profurl C320 on Staysail, new 2018

- Mast steps to main and mizzen mast.
- Lazy jacks to main and mizzen.
- Trysail track on main mast.
- Sails were new in 2018;

**the boat was not sailed from December 2019 to January 2023.**

## ELECTRICAL

---

Batteries: New batteries 2023

Battery Charger: YES

Notes: **New batteries 2023**

- All electrical wiring replaced in 2018. 12V and 220V systems rewired in 2018.
- Charging via Watt&Sea tow generator.
- Two Solara solar panels mounted on coachroof.
- Battery charger and 220V ring main.
- LED lights throughout.
- 12V charging points throughout the boat.

## SAFETY

---

Fire-extinguishers: 1

Epirb: YES

Notes: • Wire jackstays running from coachroof to foredeck.

- lastimo rescue sling.
- Seago inflatable horseshoe.
- 3 manual bilge pumps.
- Fire extinguishers.
- Emergency rudder and fittings for emergency sail rigging were added during the GGR refit.

## ACCOMMODATIONS

---

Berths number: 5

Cabins number: 2

Shower: YES

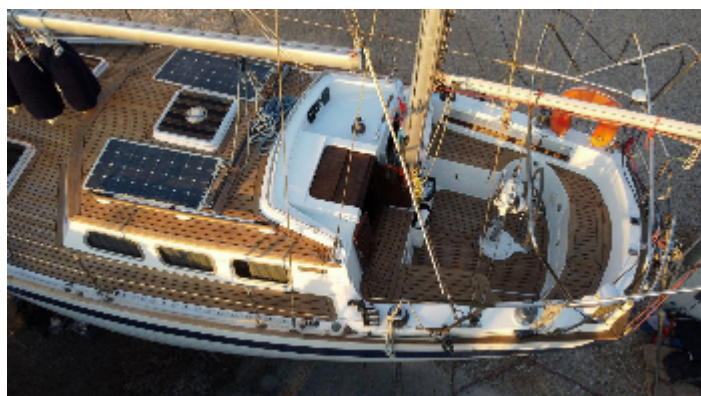
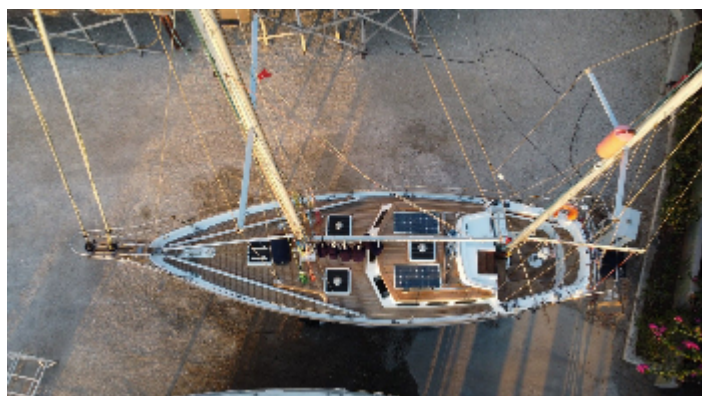
- Notes:
- Quarter berth behind navigation station on port side. U-shaped saloon seating to starboard.
  - Twin bunk cabin to starboard. Heads forward on starboard side.
  - Sink and shower on port side. Forward two-berth room with Hercules hatch.
  - Custom-made mattresses installed in 2023.

## EXTRA NOTES

---

- Extra Notes:
- Full rebuild in 2017. Major refit completed in 2017-2018 for the Golden Globe Race.
  - Further refit and upgrades in 2023. T
  - The yacht is offered as a ready-to-sail, ocean-capable cruising boat.
  - New rigging, ballast, and rudder installed. New North Sails, a Volvo Penta D2-40 engine, solar panels, radio, windvane, hydrogenerator, emergency rudder, and fittings for emergency sail rigging were also added.

## Image Gallery



## Image Gallery



:



:



:



:



:



:

### Image Gallery



### Image Gallery



:



:



:



:



:



:

## Image Gallery



:



:



:



:



:



:

### Image Gallery



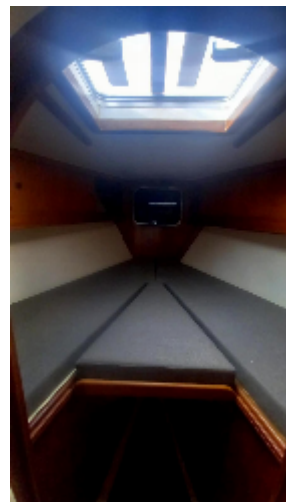
:



:



:



:



:

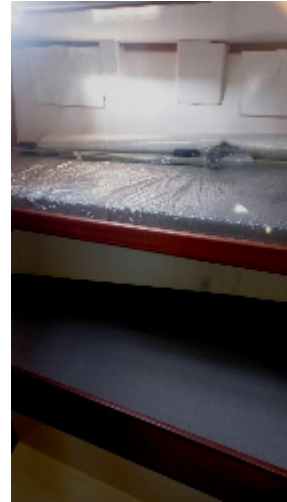


:

### Image Gallery



:



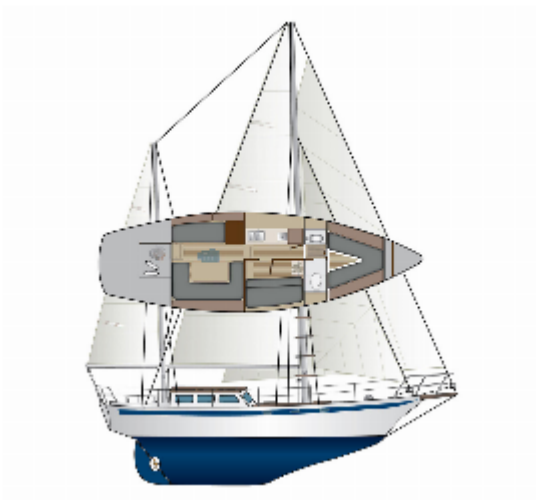
:



:



:



:

Cruiser-Racer offers the details of all vessels in good faith but cannot guarantee or warrant the accuracy of this information or warranty the condition of any vessel and the details do not constitute a part of any contract. A buyer should instruct his agents, or his surveyors, to investigate such details as the buyer desires validated. All vessels are offered subject to prior sale, price change, or withdrawal without notice. Cruiser-Racer provides professional yacht conveyancing and legal transfer of title for all yachts as per the ABYA Code of Practice with all deposit payments and final balance payments processed through secure dedicated client accounts solely for that purpose.