

C R U I S E R
R A C E R
www.cruiser-racer.com

Buscarons, 6. 08022 Barcelona (Spain)
Tel.:(+34) 934 186 632
Mobile: (+34) 616 420 634
E-Mail: info@cruiser-racer.com

MAXI DOLPHIN 62 EKITA



Yacht Name	MAXI DOLPHIN 62 EKITA	LOA	20.40 m
Model	62	Beam	5.40 m
Designer	Alejandro Bottino	Draft	4.5 m
Year	2022	Displacement	21000 kg
Location	ITALIA	Engine	VOLVO 150 D3
Price	2.250.000€		

BROKER'S COMMENT:

It boasts very high level of performance and sophistication, making it a desirable choice for buyers

DESCRIPTION:

EKITA is a contemporary 62-foot sailing yacht that combines elegant design with outstanding sailing capabilities. As the second unit of the MD62ab series, she was built by Maxi Dolphin in partnership with naval architect Alejandro Bottino, delivering a blend of innovation, style, and performance that makes her highly attractive to discerning owners.

Delivered in 2022, EKITA was conceived to provide comfortable and enjoyable cruising while also offering the opportunity to compete successfully in the Mini Maxi racing circuit. To achieve this versatility, the yacht incorporates advanced construction techniques focused on minimizing weight while maximizing structural integrity, together with a lifting keel that enhances both racing performance and cruising flexibility.

Her sailing setup reflects a strong performance-oriented philosophy. The yacht features an advanced rig equipped with extensive hydraulic systems, state-of-the-art electronics, and a powerful sail wardrobe highlighted by a square-top mainsail. These elements ensure exceptional responsiveness and efficiency in a wide range of sailing conditions.

Inside, EKITA offers refined and luxurious accommodations inspired by the first MD62ab. Lightweight sandwich construction is paired with elegant Canaletto walnut finishes, while marble surfaces in the bathrooms add an extra touch of sophistication and comfort.

Constructed entirely in carbon fiber for both hull and deck, EKITA is a fast cruiser with moderate displacement, designed to deliver impressive speed and handling under sail. The use of premium materials throughout the interior, combined with the meticulous craftsmanship employed during construction, places her firmly within the luxury yacht category.

The deck arrangement has been carefully developed to serve both cruising and competitive sailing. Its adaptable configuration allows a quick transition between the two modes, including the option of replacing the single backstay with twin backstays to optimize the use of the square-top mainsail.

Equally suited to extended voyages in destinations such as the Mediterranean and the Caribbean, EKITA is prepared for a wide variety of racing formats, from inshore regattas to demanding offshore competitions.

Her excellent sailing characteristics and favorable ORC rating have already translated into notable successes, including podium finishes and strong results in some of the Mediterranean's most prestigious regattas.

DESIGN

Builder:	Maxi Dolphin
Designer:	Alejandro Bottino
Design Notes:	EKITA's exterior design showcases the exceptional use of carbon fiber, enhancing her capabilities as a cruiser/racer.

As guests step aboard, they will discover the light, modern and airy interior of EKITA. With tons of natural light, brand-new finishes and plenty of space, anyone who spends time onboard will be in complete luxury. The combination of refined woods, light fabrics and stones creates a stylish aesthetic that is both inviting and sophisticated.

DIMENSIONS

LOA:	20.40 m
Beam:	5.40 m
Draft:	4.5 m
Displacement:	21000 kg
Dimension Notes:	DRAFT 2.5 MT / 4.5 MT Lifting Keel

ENGINES

Engines:	VOLVO 150 D3
Notes:	<ul style="list-style-type: none">• VOLVO 150 D3• GENERATOR Onan QD 9.5Kw 220V 50Hz 1500RPM

TANKS

Fuel:	850 l
Water:	700 l
Notes:	<ul style="list-style-type: none">• Fresh water total : 700 Lt• Diesel total : 850 lt• Boiler 80lt

GALLEY

Refrigerator:	2
Notes:	<ul style="list-style-type: none">• Heating and air conditioning• 2 Refrigerators• Freezer• Ice maker

- Wine Fridge

NAVIGATION INSTRUMENTS

Notes:

- 2 External Plotters
- 1 Internal Plotter
- Wind Station
- Autopilot
- Log
- Depth Sounder

DECK EQUIPMENT

Winches:

HARKEN

Notes:

- Winches by Harken
- Bow Truster / Stern Truster
- Furling Jib by Bamar
- Anchor Windlass

SPARS & RIGGING

Sails:

- Vang
- Mainsail Outhaul
- Mainsails Caningham
- Jib Caningham
- Inner Stay Tensioner

Racing Membranes Sails 2022

- Square Top Mainsail Carbon Lite Skin by Orange Sails
- Jib 1 Carbon Lite Skin by Orange Sails
- Jib 2 Carbon Lite Skin by Orange Sails
- Jib 3 Carbon Lite Skin by Orange Sails
- A1 by Orange Sails
- A2 by Orange Sails
- A3 by Orange Sails
- Storm Stay Sail Carbon Taffetta Structural Luff by Orange Sails

- Asymmetric Stay Sail Triradial Kevlar Laminated by Orange Sails
- Try Sail
- Storm Jib

Cruising Membranes Sails 2022

- Mainsail Taffetta Carbon by Orange Sails
- Furling Jib Taffetta Carbon by Orange Sails
- Furling Code0 Triradial Polyester by Orange Sails

Rigging: CARBON
 Mast: CARBON
 Boom: CARBON

ELECTRICAL

Generator: Onan QD 9.5Kw 220V 50Hz 1500RPM

- Notes:
- Mastervolt battery charger 100A
 - (4) Batterie servizi AGM da 240Ah per un totale di 720Ah-24V
 - Autoclave 24V
 - Inverter 3000W
 - (4) Service Batteries AGM 240 Ah, total 720Ah-24V
 - GENERATOR Onan QD 9.5Kw 220V 50Hz 1500RPM

SAFETY

Fire-extinguishers: 1
 Liferaft: YES

CONSTRUCTION

Keel: lifting

- Notes:
- The lifting keel by Cariboni allows for a shallow draft of 2.5 meters, enabling access to any port or harbor. With the keel down, EKITA reaches a maximum draft of 4.5 meters, unleashing her impressive performance potential.
 - The yacht's carbon continuous rigging supports the high module carbon mast from Offshore Spars and the Park Avenue boom.

- For racing, EKITA boasts a remarkable set of sails, including a square top mainsail supported by double backstay adjustable with two performance Harken winches.
- She features a separate set of sails optimized for cruising, with a single backstay, offering a more relaxed sailing experience.
- TWINS RUDDER

ACCOMMODATIONS

Air conditioning: YES

Heating: YES

Notes: Accommodating up to six guests, the yacht features three well-appointed staterooms. The spacious master stateroom, located forward, offers abundant storage and a luxurious bathroom, while the two double cabins situated aft provide comfortable retreats.

- Bow double Cabin
- 1 twin beds aft Cabin
- 1 double aft Cabin
- 1 front crew Cabin/Sails Locker
- 4 Electric WC
- Heating and air conditioning

Image Gallery



:



:



:



:



:



:

Image Gallery

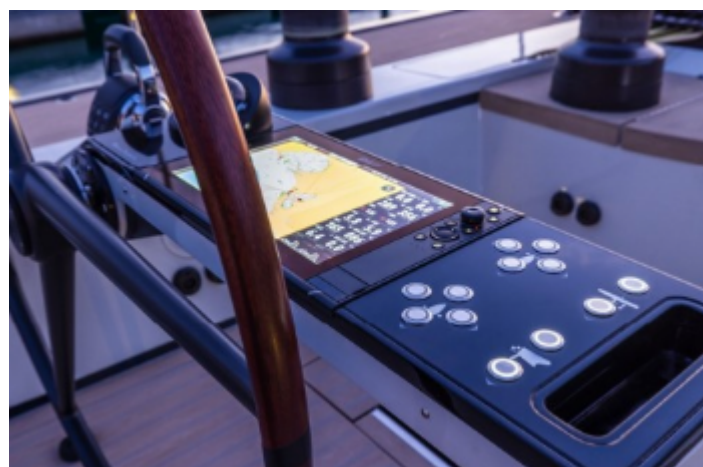


Image Gallery



:



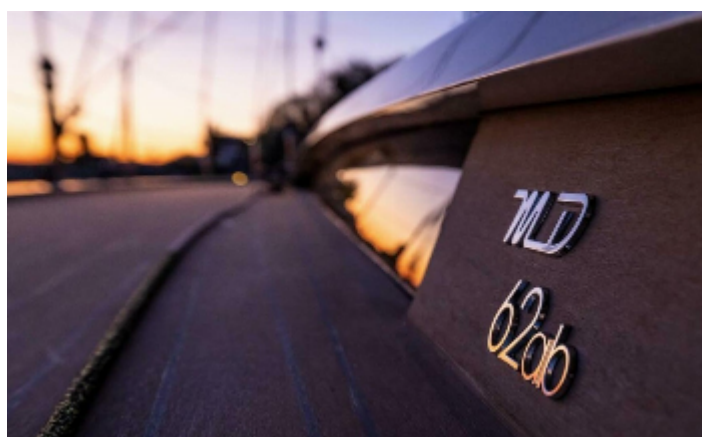
:



:



:



:



:

Image Gallery



:



:



:



:



:



:

Image Gallery



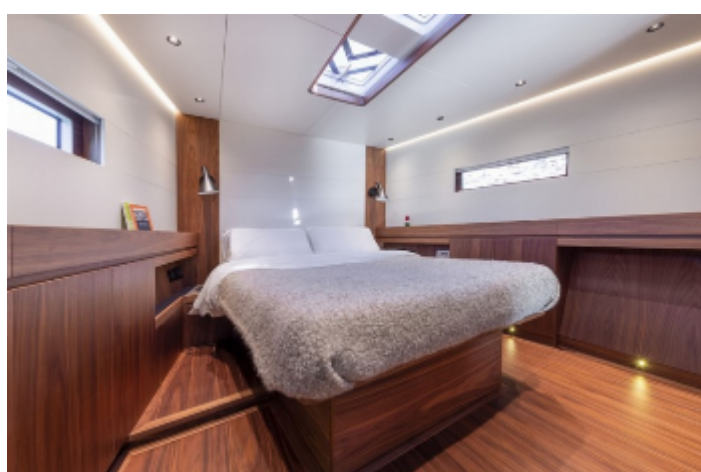
:



:



:



:



:



:

Image Gallery



: