

**C R U I S E R**  
**R A C E R**  
 www.cruiser-racer.com

Buscarons, 6. 08022 Barcelona (Spain)  
 Tel.:(+34) 934 186 632  
 Mobile: (+34) 616 420 634  
 E-Mail: info@cruiser-racer.com

## FARR 52 ENIGMA DK



<b>Yacht Name</b>	FARR 52 ENIGMA DK	<b>LOA</b>	15.79 m
<b>Model</b>	FARR 52 ENIGMA DK	<b>Beam</b>	4.40 m
<b>Designer</b>	BRUCE FARR DESIGN	<b>Draft</b>	3.25 m
<b>Year</b>	2002	<b>Displacement</b>	9360 kg
<b>Location</b>	BARCELONA	<b>Engine</b>	YANMAR 4JH57
<b>Price</b>	At Request		

### **BROKER'S COMMENT:**

Built by DK YACHTS on a Bruce Farr plan, and optimized for IRC racing

## DESCRIPTION:

This boat was built in 2002 on a Bruce Farr plan, and optimized for IRC racing. She was then purchased by a client from New Zealand, and returned to France in 2012.

The Farr 52 is faster downwind than the current ILC Maxi World Champion in winds less than 5 knots and over 20 knots and faster downwind than the CML 60 in all wind intensities. The all-carbon hull construction, combined with a cast steel keel fin, lead bulb and minimal internal ballast (just enough to allow overall weight to be adjusted to the limit), generates a ballast ratio of 54% for a high stability and brilliant speed upwind.

The performance versus PPV rating comparisons between the Farr 52 and other top IMS designs of the same size are encouraging for those wishing to collect silverware in IMS regattas prior to or in parallel with proposed OD activity. On an upwind/downwind course, the Farr 52 will be 30 to 50 seconds per mile faster upwind and 23 to 50 seconds per mile faster downwind (with standard fractional IMS spinnaker) than a typical optimal IMS with travel times of 50 feet equivalent to an IMS of 58 feet. boat.

This huge performance gap will give the crew of the 52 the potential to outperform the current IMS 50 fleet while enjoying exciting sailing and fully competitive corrected times.

## RATING

- ORC INTERNATIONAL CERTIFICATE
- ESP 888
- APH 2025: 420,9
- CDL: 14,499

## RESULTS

- 2025 CHAMPION OVERALL CATALAN OFFSHORE CHAMPIONSHIP
- 2025 CHAMPION OVERALL OFFSHORE CATALAN CUP

## REFIT: 2025

BASE PORT: BARCELONA RCNB

SAIL N.: ESP888

FLAG: FRENCH

## DESIGN

---

Builder: DK Yachts

Designer: BRUCE FARR DESIGN

## DIMENSIONS

---

LOA:	15.79 m
Beam:	4.40 m
Draft:	3.25 m
Displacement:	9360 kg

## ENGINES

---

Engines: YANMAR 4JH57

Notes:

- YANMAR DIESEL 4JH57. 57 hp. New 2025
- PROPELLER: FOLDABLE GORI RACE 2 BLADES
- STAINLESS STEEL FUEL TANK 150 liters

## TANKS

---

Fuel: 150 l

## NAVIGATION INSTRUMENTS

---

Electronics: B&G: HERCULES

GPS: YES

VHF: YES

Automatic pilot: YES

Notes:

- B&G: HERCULES
- 2 NEMESIS ON MAST
- 3 PLOTTERS S
- 2 TRITON DISPLAYS
- 3D SENSOR
- H5000 AUTOHELM WITH RAM HIDRAULIC
- WIND SENSOR
- SPEED SENSOR
- DEPTH SENSOR
- VHF RADIO WITH AIS.
- Wifi

## DECK EQUIPMENT

---

Winches: HARKEN

Notes:

- 2 HARKEN GRINDER PEDESTALS
- 7 HARKEN WINCHES
- HIDRAULIC CENTRAL FOR VANG, OUTHALL AND MAST
- 7 SPINLOCK STOPER

## SPARS & RIGGING

---

Sails: MAIN: SQUARE EUROPE SAILS 95sqm 2024

GIBS:

- G1 EUROSAILS
- G 1,5 LM NORTH SAILS
- G 2 EUROSAILS
- G3 EUROSAILS
- G4 EUROSAILS
- SPI STAY SAIL EUROSAILS

STORM SAIL & TRY SAIL

### ASYMETRIC SPINAKERS:

- A1,5 NORTH SAILS
- A2 NORTH SAILS 2024
- A3 EUROPESAILS
- A4 EUROPESAILS. Fractional
- AO DIMENSION POLYANT

Rigging: Rod - 2025

Mast: Carbon

Boom: Carbon

Vang: Yes

Tuff luff: Yes

Running Rigging: Dyneema

**Spars and Rigging**

Notes:

Rigging Rod from 2025 Carbon composite neck, just like the saffron, suspended with a composite axis.

CARBON MAST, BOOM AND RUDDER

**ELECTRICAL**

Batteries:

3

Battery Charger:

YES

Notes:

VICTRON:

- Lithium bateries: 400 Amp. Services+ 55Amp engine batery
- Charger/inverter: 100Amp/ 2000W.

**SAFETY**

Fire-extinguishers:

YES

Epirb:

YES

Liferaft:

YES

**CONSTRUCTION**

Notes:

CARBON HULL, MAST,BOOM AND RUDDER

The all-carbon hull construction, combined with a cast steel keel fin, lead bulb and minimal internal ballast (just enough to allow overall weight to be adjusted to the limit), generates a ballast ratio of 54% for a high stability and brilliant speed upwind.

**ACCOMMODATIONS**

Shower:

Yes

Notes:

Bath:1

**EXTRA NOTES**

Extra Notes:

**RESULTS**

- 2025 CHAMPION OVERALL CATALAN OFFSHORE CHAMPIONSHIP
- 2025 CHAMPION OVERALL OFFSHORE CATALAN CUP

AVAILABLE FOR:

**OFFSHORE RACES**

- VOILES DE ST. TROPEZ 2026
- MIDLE SEA RACE 2026
- PALMA VELA OFFSHORE RACE 2026
- GIRAGLIA 2026
- AEGEAN 600 2026
- VOILES DE ST. TROPEZ 2027
- MIDLE SEA RACE 2027

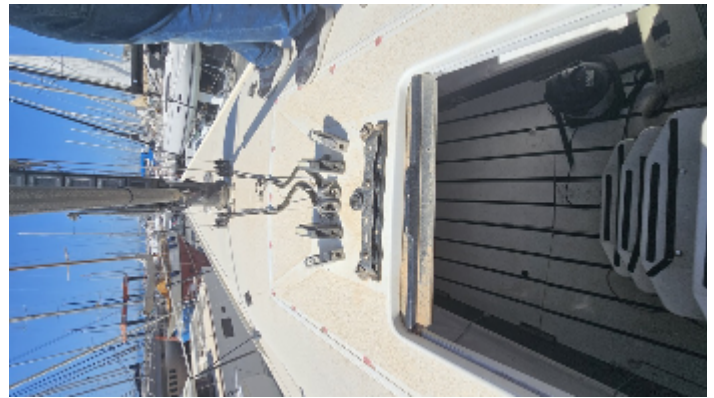
**INSHORE RACES**

- GIRAGLIA INSHORE RACES 2026
- PALMA VELA 2026 INSHORE
- TROFEO GODO 2026
- TROFEO SM LA REINA 2026
- COPA DEL REY 2026

## Image Gallery



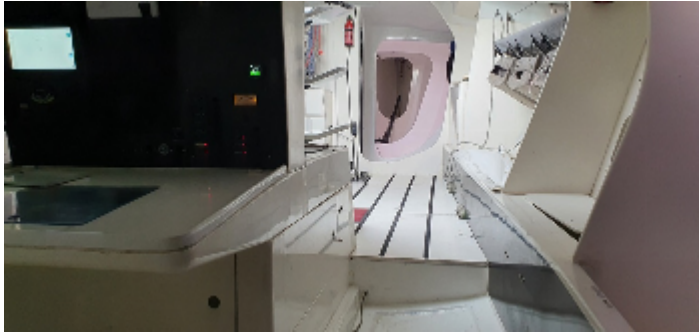
## Image Gallery



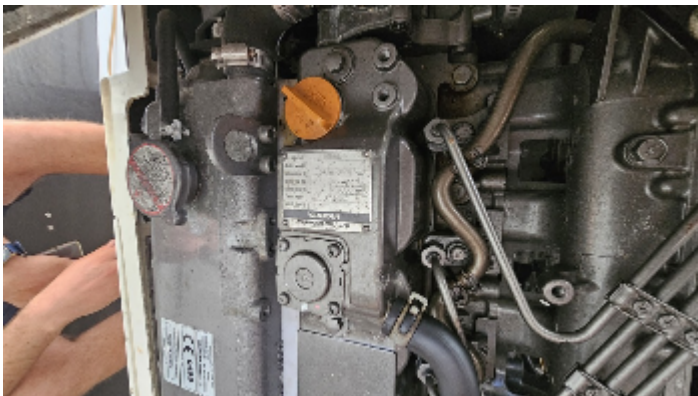
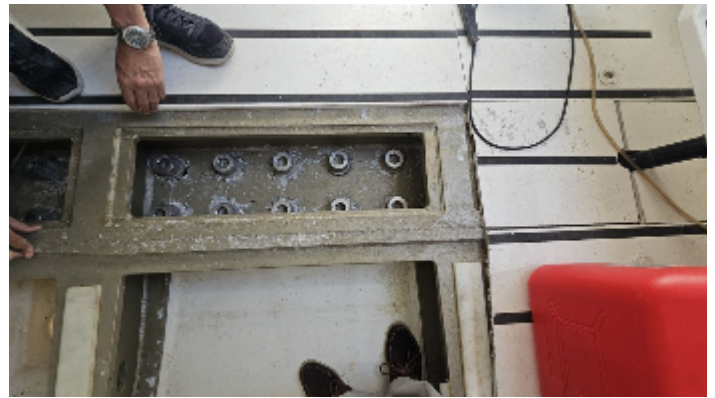
## Image Gallery



## Image Gallery



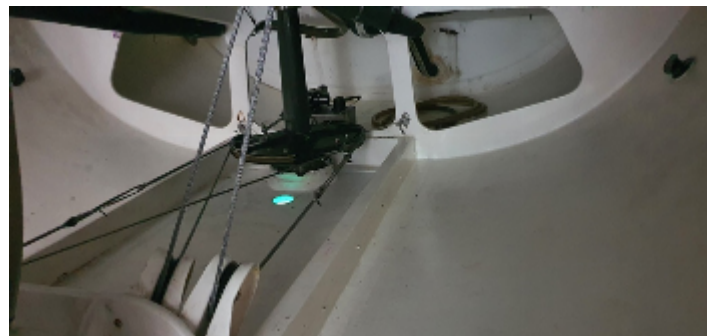
## Image Gallery



## Image Gallery



## Image Gallery



## Image Gallery

